

Whitebark Pine Restoration: How it's done and how YOU can HELP

Adrian Leslie, MSc. RPBio.

June 23, 2021

Rossland Museum Speaker Series



Funding Provided by:

Columbia Basin **trust**



Environment and
Climate Change Canada

With in-kind support from:

Selkirk  College











Whitebark Pine Habitat

Darkwoods/Next Creek



0 5 10 Km

Key to Features

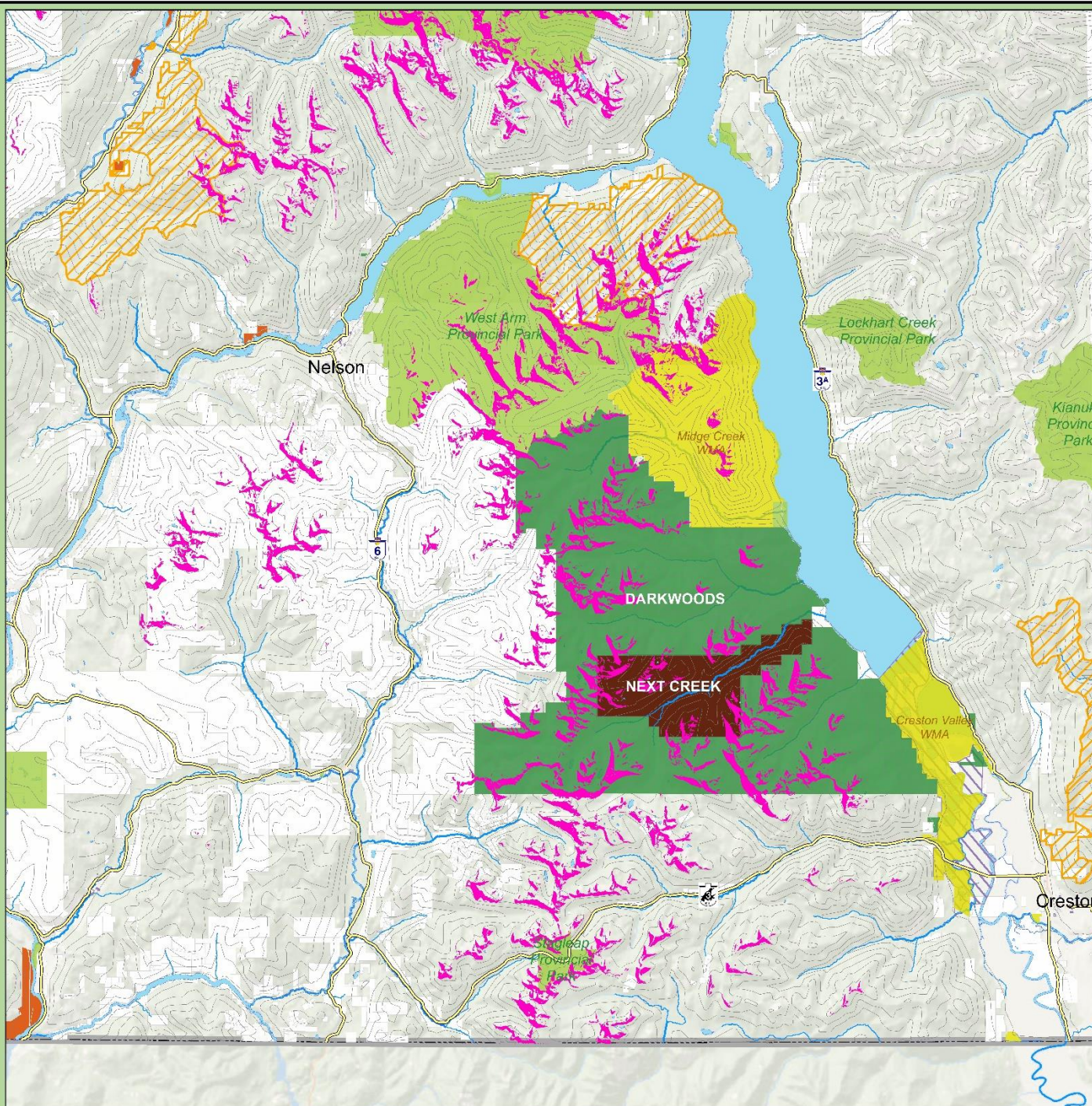
- Highway
- 200m contour
- Whitebark Pine Core Habitat
- Next Creek Securement Project
- NCC Protected Lands
- Provincial Park/Protected Area
- Provincial Wildlife Management Area
- Regional/Municipal Greenspace
- Lands Protected by Other NGOs
- Community Forest
- Crown

Disclaimer:
This map is illustrative only. Do not rely on it as being a precise indicator of privately-owned land, routes, locations of features, nor as a guide to navigation.
This map may contain omissions or errors.

Data Sources: BC Ministry of Forests, Lands, Natural Resource Operations, and Rural Development, 2017, 2018 (Provincial Parks and Protected Areas, WMAs, Local and Regional Greenspaces, Community Forests); BC Land Title and Survey, 2018 (ParcelMap BC Cadastre); British Columbia NGO Conservation Areas Database Technical Working Group, 2017 (BC NGO Conservation Areas Database).
Service Layer Credits: Esri, DeLorme, GEBCO, NOAA NGDC, and other contributors.

Projection: NAD 1983 UTM Zone 11N

© The Nature Conservancy of Canada November 2018













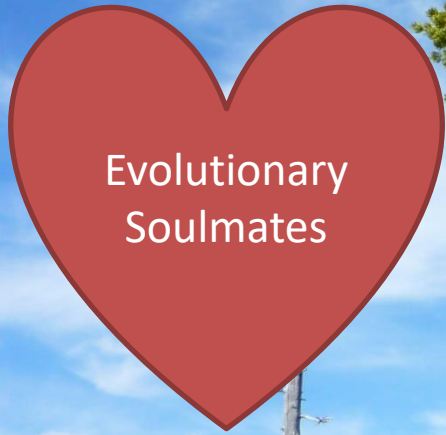






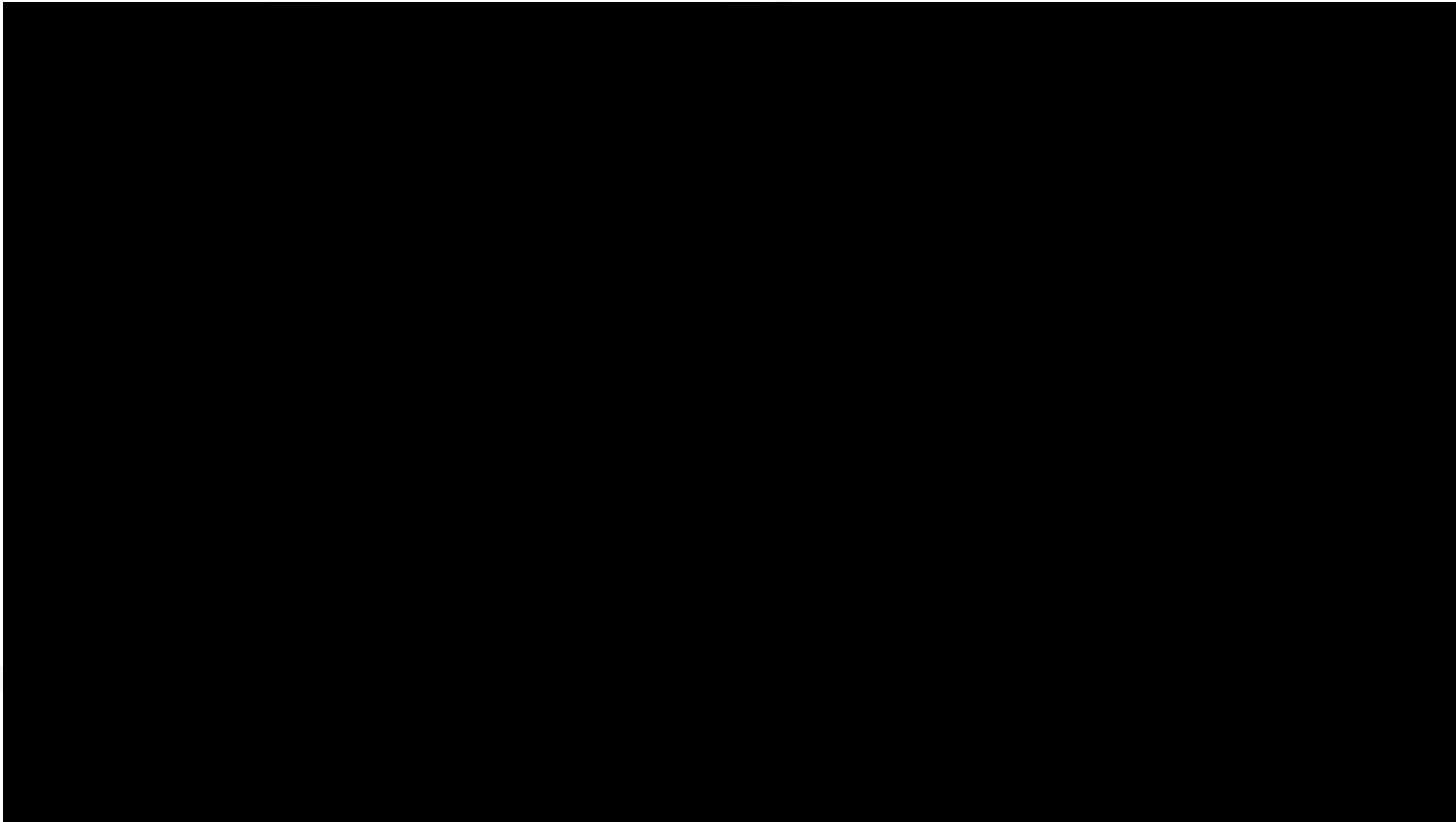


Obligate Mutualists



Evolutionary
Soulmates













July 27



September 16















Watered Bag
1. Cops + Cones
#790

BE
10

gan
NS

1710

LOONS
100% ALL-NATURAL LAMBS' FEED
LAMB'S FEED

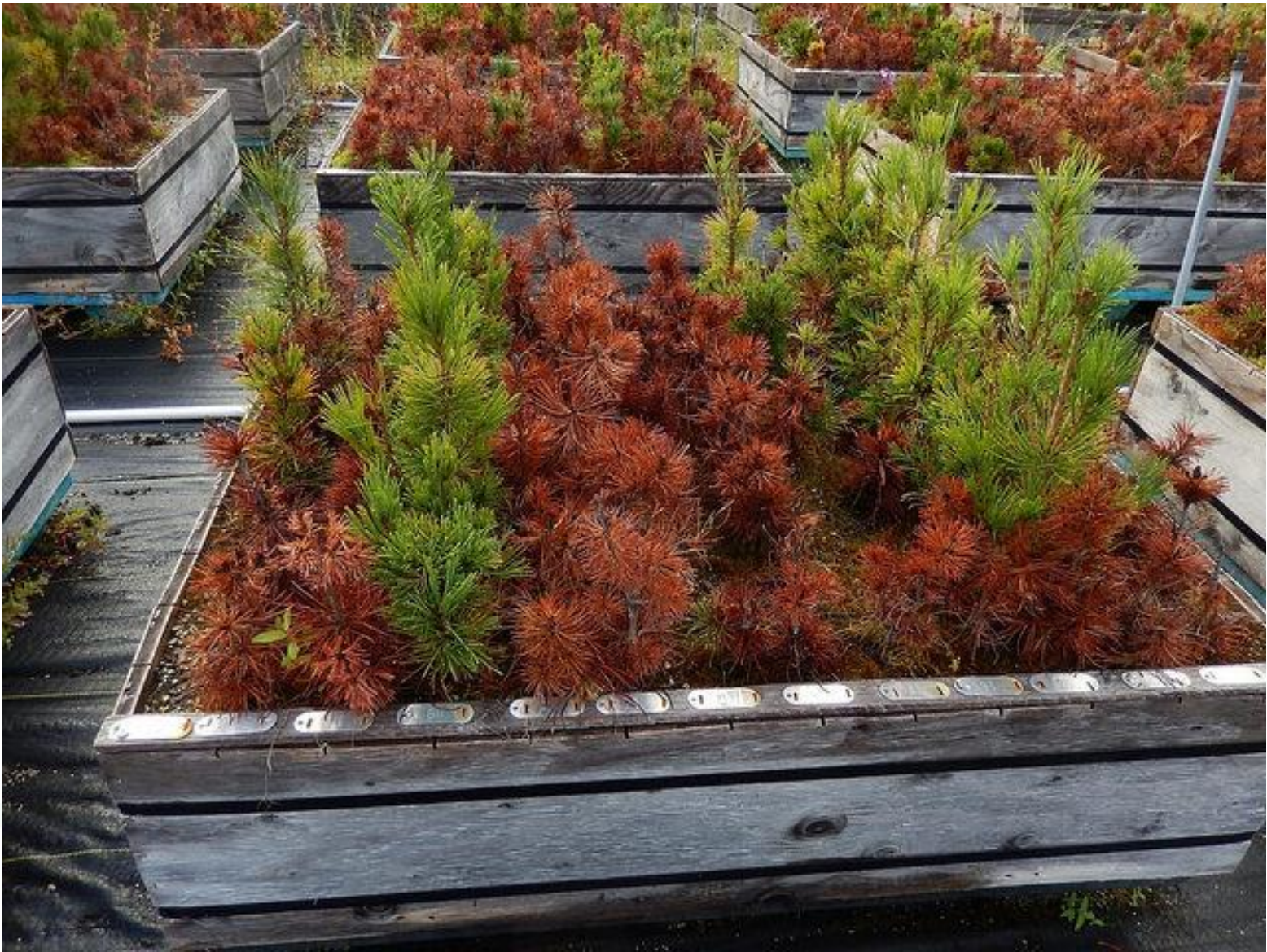






A3 Stag leap

6/6 P



<https://www.usda.gov/media/blog/2018/06/12/tree-breeding-creating-tomorrows-healthy-forests-today>









Whitebark Pine Habitat

Darkwoods/Next Creek



0 5 10 Km

Key to Features

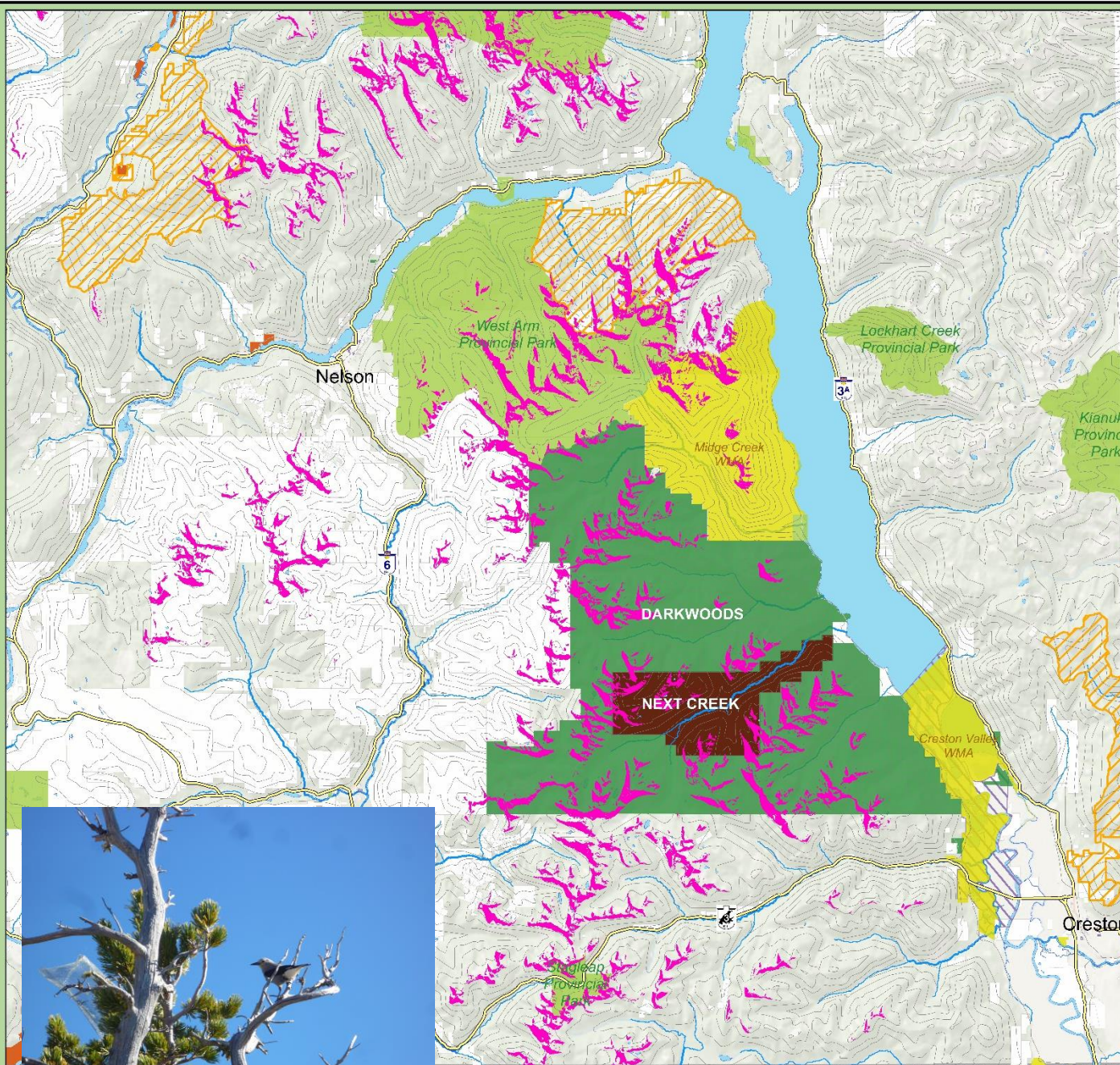
- Highway
- 200m contour
- Whitebark Pine Core Habitat
- Next Creek Securement Project
- NCC Protected Lands
- Provincial Park/Protected Area
- Provincial Wildlife Management Area
- Regional/Municipal Greenspace
- Lands Protected by Other NGOs
- Community Forest
- Crown

Disclaimer:
This map is illustrative only. Do not rely on it as being a precise indicator of privately-owned land, routes, locations of features, nor as a guide to navigation.
This map may contain omissions or errors.

Data Sources: BC Ministry of Forests, Lands, Natural Resource Operations, and Rural Development, 2017, 2018 (Provincial Parks and Protected Areas, WMAs, Local and Regional Greenspaces, Community Forests); BC Land Title and Survey, 2018 (ParcelMap BC Cadastre); British Columbia NGO Conservation Areas Database Technical Working Group, 2017 (BC NGO Conservation Areas Database).
Service Layer Credits: Esri, DeLorme, GEBCO, NOAA NGDC, and other contributors.

Projection: NAD 1983 UTM Zone 11N

© The Nature Conservancy of Canada November 2018









iNaturalist – Citizen Science

Map Grid List Places of Interest Redo search in map

Whitebark Pine
(*Pinus albicaulis*)
Paulina Peak, Newb... • Jun 18, 2021
Research Grade 1 7h

Whitebark Pine
(*Pinus albicaulis*)
Deschutes County,... • Jun 19, 2021 11h

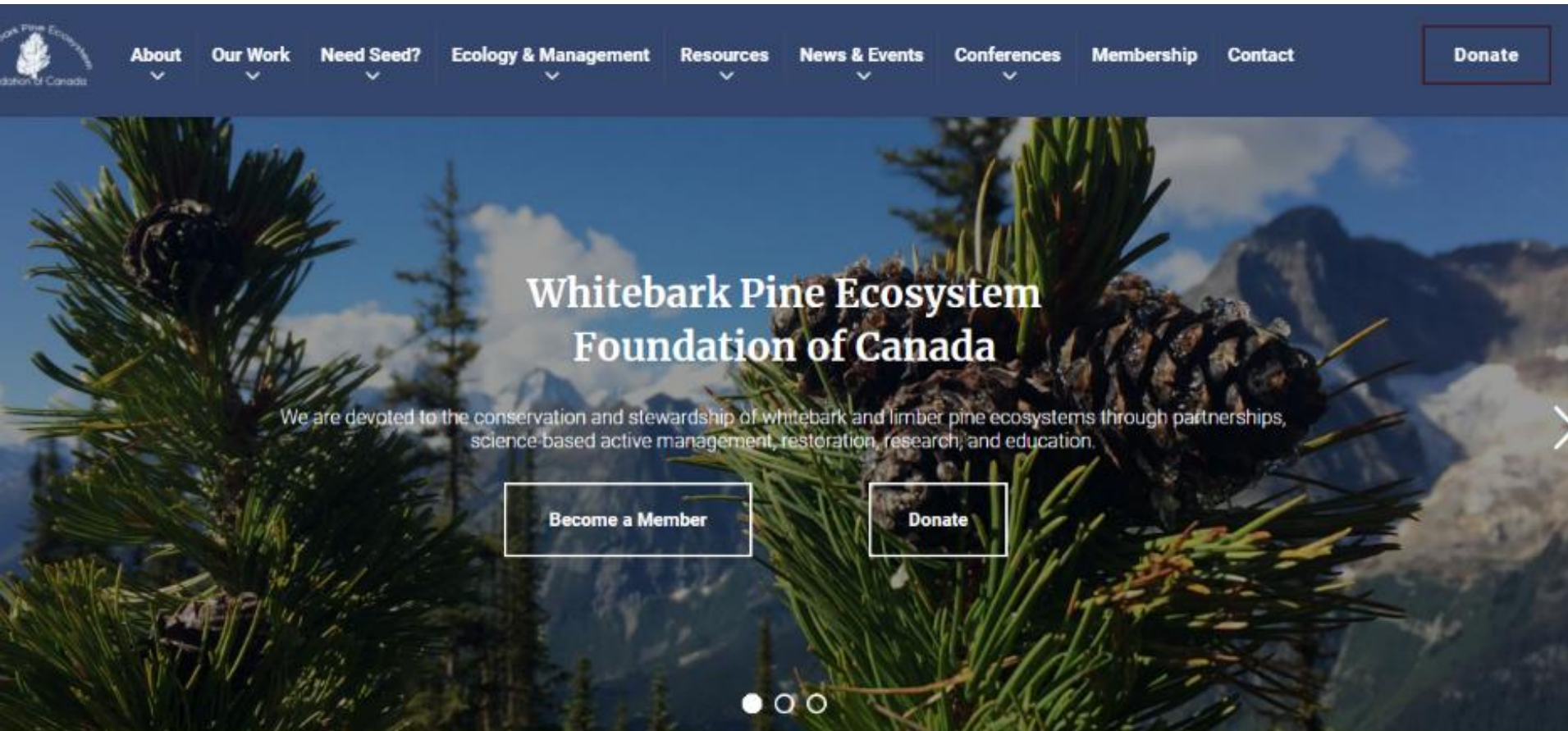
Whitebark Pine
(*Pinus albicaulis*)
Jefferson County,... • Yesterday 20h

Whitebark Pine
(*Pinus albicaulis*)
Wallowa-Whitman Na... • Jun 21, 2021 20h

Map Legend

Map data ©2021 Google 10 km Terms of U

- <http://www.whitebarkpine.ca/>



Natureconservancy.ca



[Who We Are](#)

[What We Do](#)

[Where We Work](#)

[What You Can Do](#)

[Donate](#)



[Home](#) > [Where We Work](#) > [British Columbia](#) > [Our Work](#) > [Science and research](#)



[British Columbia](#)

[Stories From the Field](#)

Pining for whitebark



Adrian Leslie is concerned about an endangered pine tree that grows in high elevation forests and at treeline in the mountains of BC and Alberta. Whitebark

Thank You



Whitebark Pine Habitat

Darkwoods/Next Creek



0 5 10 Km

Key to Features

- Highway
- 200m contour
- Whitebark Pine Core Habitat
- Next Creek Securement Project
- NCC Protected Lands
- Provincial Park/Protected Area
- Provincial Wildlife Management Area
- Regional/Municipal Greenspace
- Lands Protected by Other NGOs
- Community Forest
- Crown

Disclaimer:
This map is illustrative only. Do not rely on it as being a precise indicator of privately-owned land, routes, locations of features, nor as a guide to navigation.
This map may contain omissions or errors.

Data Sources: BC Ministry of Forests, Lands, Natural Resource Operations, and Rural Development, 2017, 2018 (Provincial Parks and Protected Areas, WMAs, Local and Regional Greenspaces, Community Forests); BC Land Title and Survey, 2018 (ParcelMap BC Cadastre); British Columbia NGO Conservation Areas Database Technical Working Group, 2017 (BC NGO Conservation Areas Database).
Service Layer Credits: Esri, DeLorme, GEBCO, NOAA NGDC, and other contributors.

Projection: NAD 1983 UTM Zone 11N

© The Nature Conservancy of Canada November 2018

